

Seal

**30%  
SUBMISSION**

Approvals \_\_\_\_\_ Date \_\_\_\_\_

QUALITY CONTROL ENGINEER \_\_\_\_\_

CONSTRUCTION MANAGEMENT SUPERVISOR \_\_\_\_\_

WATER, SEWER STREETS BUREAU CHIEF \_\_\_\_\_

TRANSPORTATION DIRECTOR \_\_\_\_\_

PROJECT MANAGER \_\_\_\_\_

Revisions \_\_\_\_\_ Date \_\_\_\_\_

Revisions	Date

Project Name and Location

**31ST STREET S**

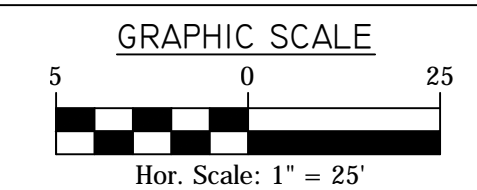
STREETLIGHT PLAN - II

S WOODROW ST TO S RANDOLPH ST

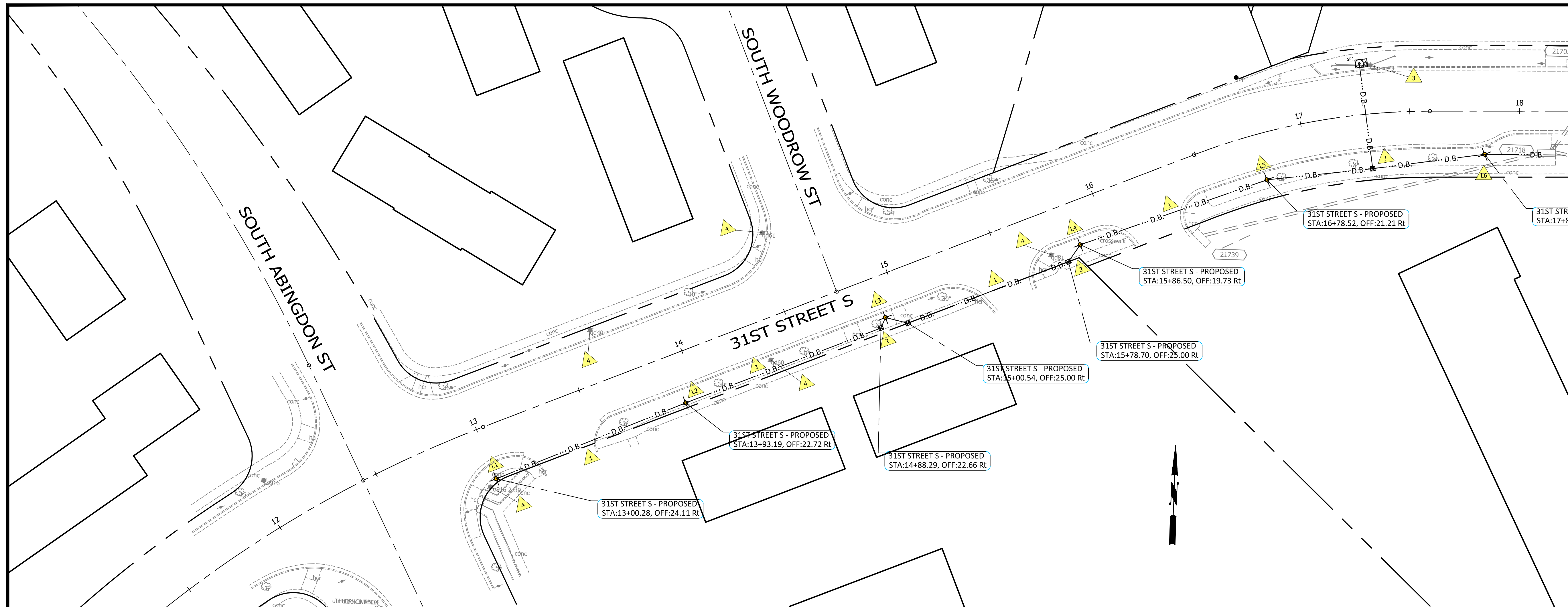
Z273

Designed: M.E.  
Drawn: M.E.  
Checked: G.S.  
Miss Utility Transmittal #: 5258-D

Filename: Z273-270-Streetlight\_Plan.dwg  
Path: O:\Data\Z273\Design\Drawings  
Plotted: October 12, 2016  
Plotted by: Melomary

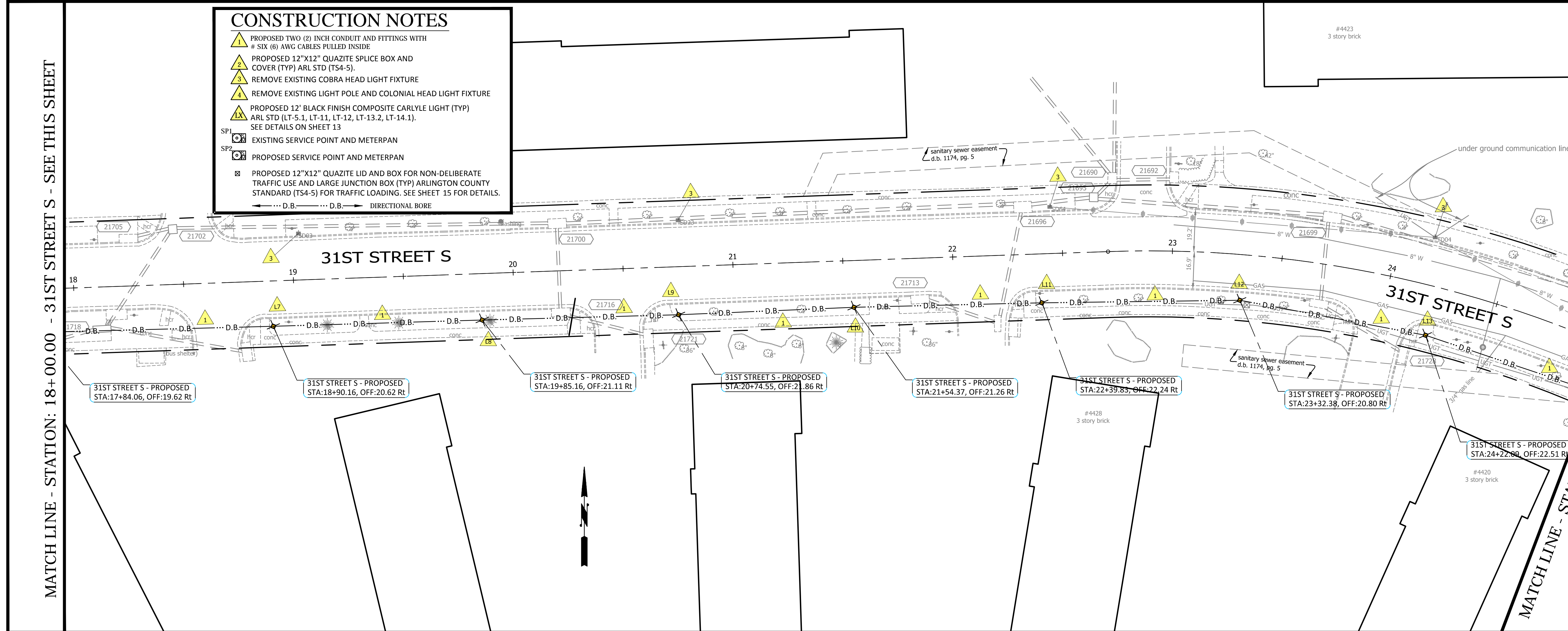


Sheet  
**6 of 9**



MATCH LINE - STATION: 18+00.00 - 31ST STREET S - SEE THIS SHEET

- CONSTRUCTION NOTES**
- ▲ PROPOSED TWO (2) INCH CONDUIT AND FITTINGS WITH # SIX (6) AWG CABLES PULLED INSIDE
  - ▲ PROPOSED 12"X12" QUARTZITE SPLICE BOX AND COVER (TYP) ARL STD (TS4-5).
  - ▲ REMOVE EXISTING COBRA HEAD LIGHT FIXTURE
  - ▲ REMOVE EXISTING LIGHT POLE AND COLONIAL HEAD LIGHT FIXTURE
  - ▲ PROPOSED 12" BLACK FINISH COMPOSITE CARLYLE LIGHT (TYP) ARL STD (LT-5.1, LT-11, LT-12, LT-13.2, LT-14.1). SEE DETAILS ON SHEET 13
  - SP1 EXISTING SERVICE POINT AND METERPAN
  - SP2 PROPOSED SERVICE POINT AND METERPAN
  - PROPOSED 12"X12" QUARTZITE LID AND BOX FOR NON-DELIBERATE TRAFFIC USE AND LARGE JUNCTION BOX (TYP) ARLINGTON COUNTY STANDARD (TS4-5) FOR TRAFFIC LOADING. SEE SHEET 15 FOR DETAILS.
  - D.B. --- DIRECTIONAL BORE



MATCH LINE - STATION: 18+00.00 - 31ST STREET S - SEE THIS SHEET

MATCH LINE - STATION: 25+00.00 - 31ST STREET S - SEE SHEET 5