




# 4 mile run valley

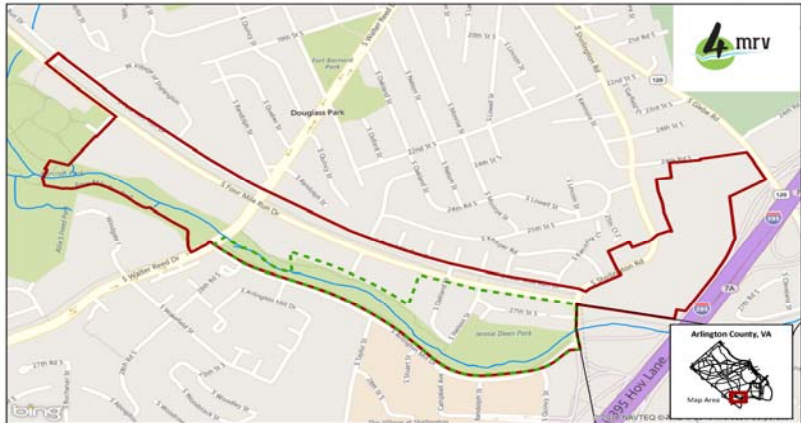
Community Open House  
July 19, 2017



ARLINGTON  
VIRGINIA



## Study Area Map

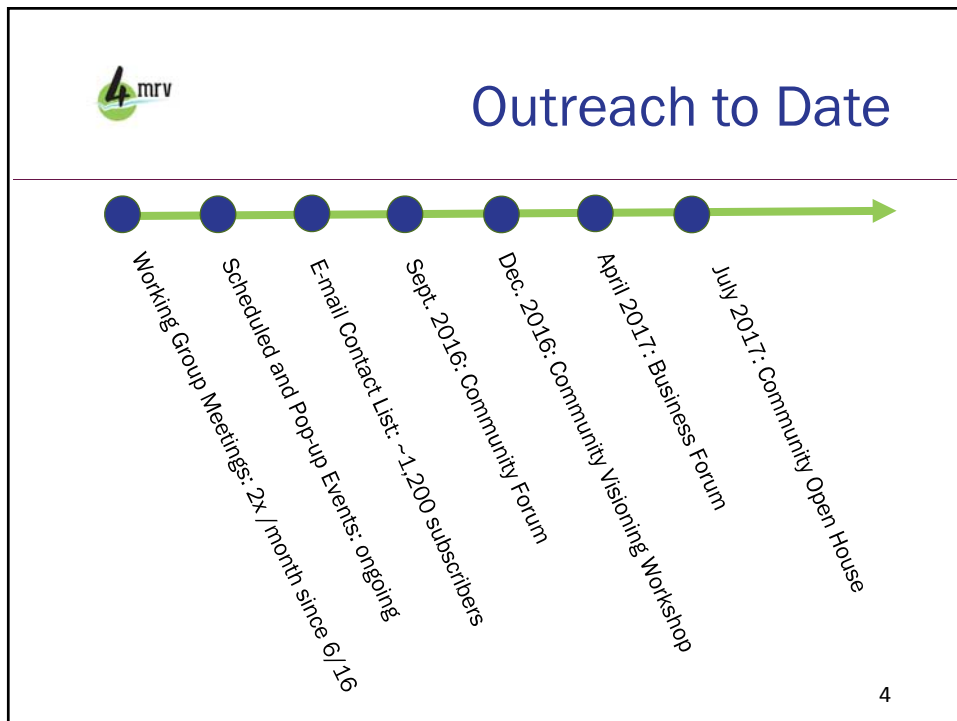
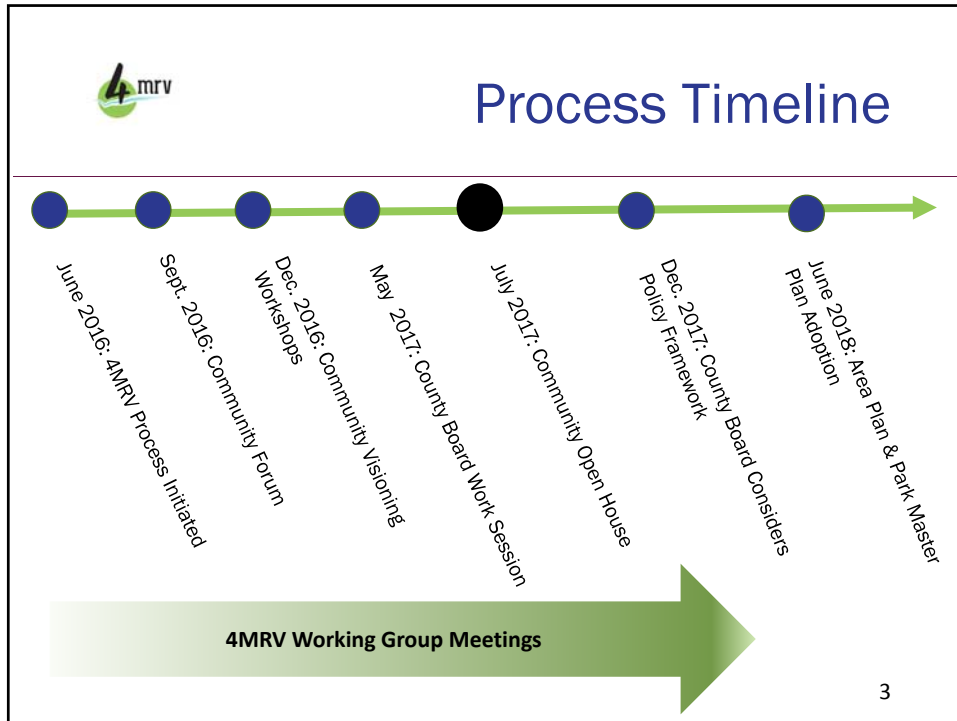


The map displays the 4 mile run valley area, outlined in red. It shows the 4 mile run valley (4 mrv) area, Douglas Park, and the 393 River Line. The map includes a legend, a north arrow, and a scale bar (0 to 0.2 Miles). An inset map shows the location of the study area within Arlington County, VA.

- Area Plan Boundary
- Park Master Plan Boundary
- Buildings
- County Line

0 0.05 0.1 0.2 Miles

2





## Working Group Membership

Name	Organization	Name	Organization
<b>Charles Monfort</b>	<b>Chair</b>	Mike Katrivanos	Business
<b>Caroline Haynes</b>	<b>Vice Chair</b>	Irwin Kim	Environment and Energy Conservation Commission
<b>Robin Stomblor</b>	<b>Vice Chair</b>	Kathleen McSweeney	Planning Commission
Richard Adler	Shirlington C.A.	Noah Mehrkam	Business
Tyra Baker	Nauck C.A.	Bryant Monroe	Econ. Dev. Commission
Shirley Brothwell	Sports Commission	Nora Palmatier	Urban Forestry Commission
Portia Clark	Nauck C.A.	David Peete	Business
Keith Fred	At-large	Tom Prewitt	Non-profit
Michael Grace	Park and Rec. Commission	Rick Schneider	Non-Profit
Adam Henderson	Douglass Park C.A.	Chris Slatt	Transportation Commission
Anne Inman	Nauck C.A.	Andres Tobar	SEEC
Carrie Johnson	At-large	Edie Wilson	Shirlington C.A.

5




## Area Plan Concepts

6



## Preserve Existing Uses



7



## Arts Associated Uses



8



## Greater Scale and Broader Uses



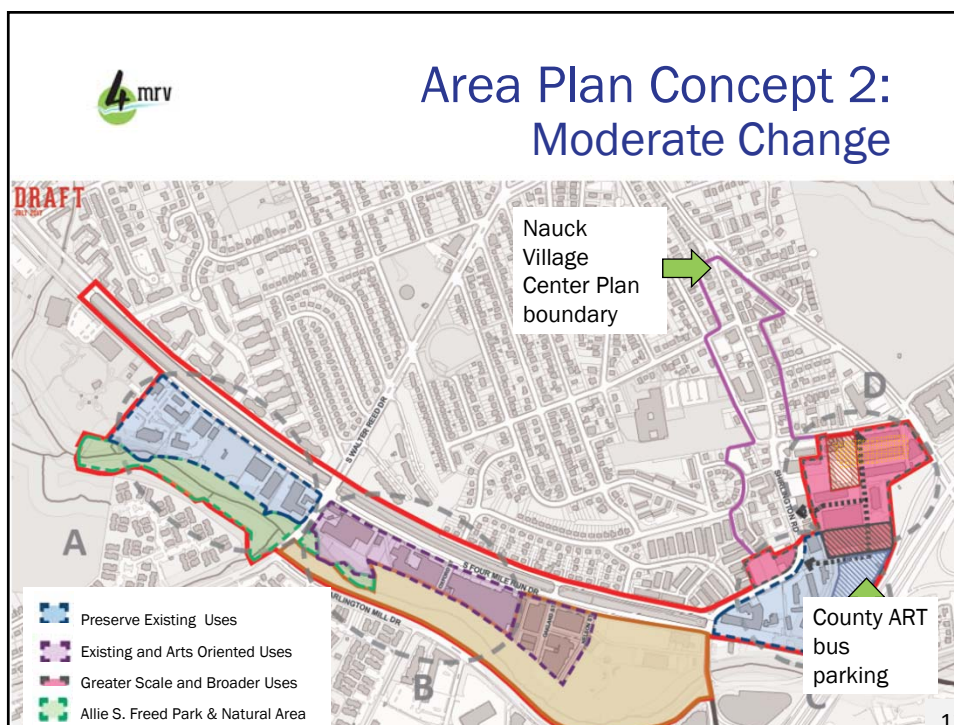
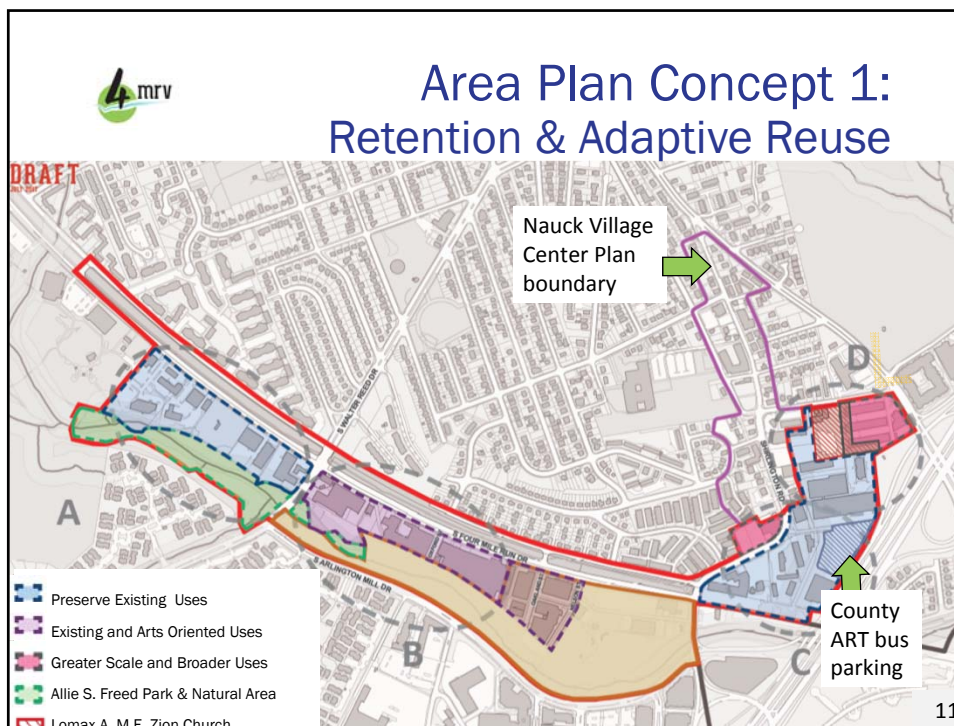
9



## Greater Scale and Broader Uses



10





# Parks Master Plan Concepts

13



## Park Concept Plans

### ROUND ONE (January 1)

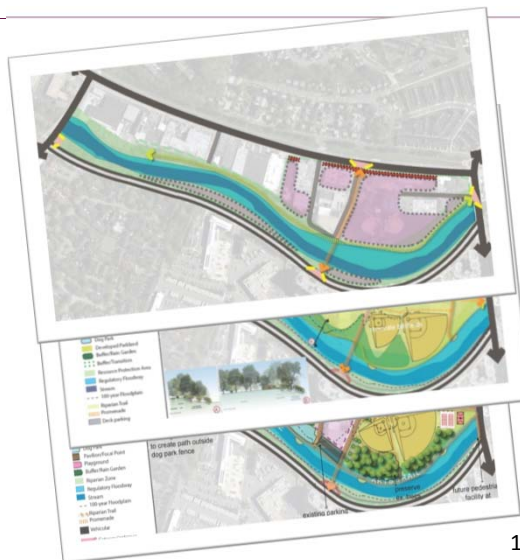
- Seven high level diagrams illustrating full range of choices

### ROUND TWO (February 7)

- Four concept plan diagrams narrowed down and revised from January 18

### ROUND THREE (March 7)

- Three recommended concept plan alternatives based upon February 7 input



14

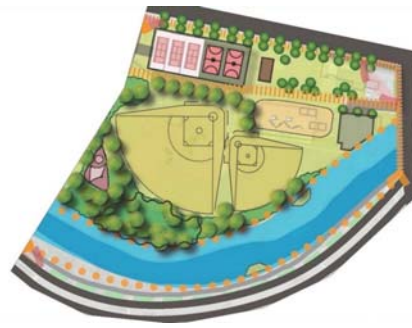


# Jennie Dean Park East of S. Nelson Street

## Option One



Phase One:  
Current County Ownership



Phase Two:  
Expanded County Ownership

15



# Jennie Dean Park East of S. Nelson Street

## Option Two




Phase One:  
Current County Ownership



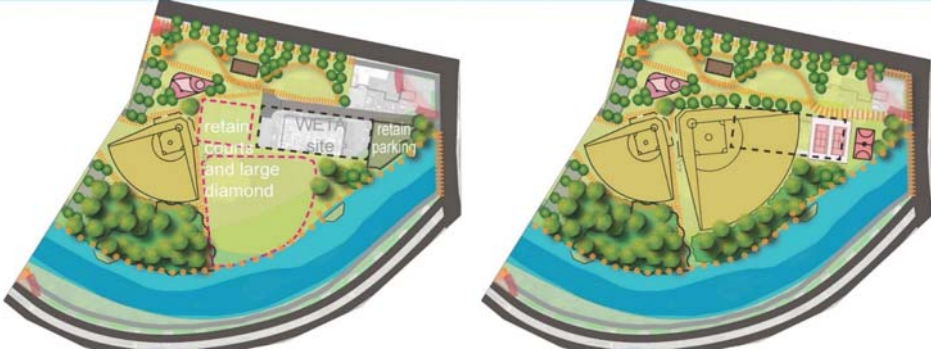
Phase Two:  
Expanded County Ownership

16



 Jennie Dean Park  
East of S. Nelson Street


Option Three



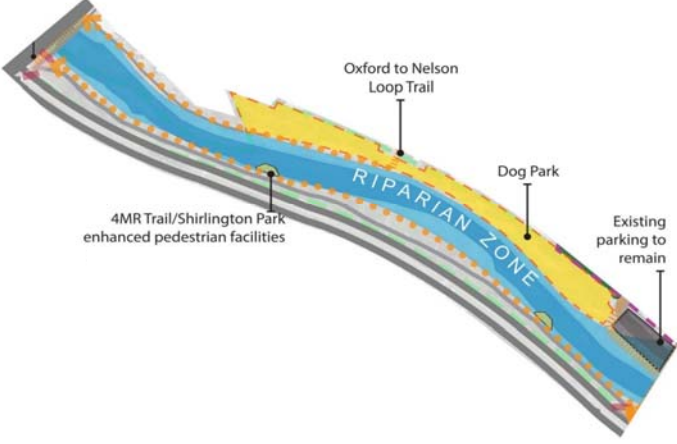
Phase One:  
Current County Ownership

Phase Two:  
Expanded County Ownership

17

 Dog Park:  
Current Configuration

- Apx. 100,000 sq. ft, +/-



Oxford to Nelson Loop Trail

Dog Park

Existing parking to remain

4MR Trail/Shirlington Park enhanced pedestrian facilities

RIPARIAN ZONE

18



## Next Steps

- Working Group meetings resume in September
- **Arts District** and **Dog Park** Committees will meet through the summer

All meetings are posted on the 4MRV web page:

[www.4MRV.com](http://www.4MRV.com)

19



## What do we want from you?

- Review the Information Boards
- Talk with staff/consultants posted around the room
- Talk with Working Group members
- **Ask questions!**
- Give us your comments:
  - Post-it notes
  - Comment sheets

20